



# User manual Air Purifier Freia

Art. 2515



Thank you for choosing this product.  
Please read this instruction manual before using it.



Read the user manual before use, refer to the corresponding section of these user instructions.



Recycle unwanted materials instead of disposing of them. All appliances and packages must be sorted and delivered to a regional recycling centre and processed in an environmentally friendly manner.



The product complies with the applicable EU directives and other provisions.

Table of contents

1. Safety instructions ..... 48

2. Parts list ..... 50

3. Before operation ..... 51

4. Instruction manual ..... 52

5. Maintenance ..... 53

6. Storage ..... 55

7. Troubleshooting ..... 56

8. Technical specifications ..... 56

9. Service ..... 57

10. Warranty ..... 57

1. Safety instructions

Warning

This appliance is intended for indoor use only in private homes. Any other use is not recommended by the manufacturer and may cause fire, electric shock, or other personal injury or damage.



**Warnings**



**Wet hands are not allowed**

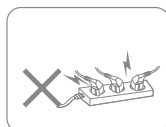


**Warning**

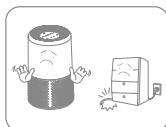
## Power cord



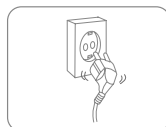
Do not try to unplug the power cord from the wall socket.



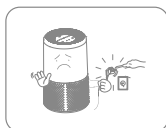
Do not connect the appliance to an overloaded extension lead.



Do not place heavy objects on the power cord in order to avoid safety risks.



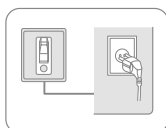
Do not use the appliance if the power cord cannot be securely fastened in the plug socket.



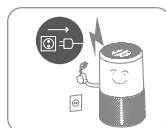
Do not attempt to replace the power cord, contact the authorised service workshop for repair.



Do not touch the plug with wet hands in order to avoid electric shock.



The socket must be grounded and properly secured.



Unplug it during lightning storms.

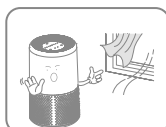
## Location



Do not place flammable and explosive objects around the appliance in order to avoid fire.

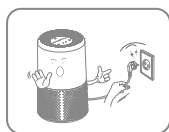


Place the appliance on a stable, flat surface.

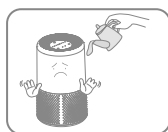


Do not use the appliance in locations with a draught.

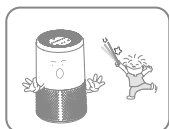
### During use



Turn off the power and unplug the power cord before moving the device.



Do not pour water into the appliance in order to avoid malfunction.



Children should be supervised to ensure that they do not play with the appliance.



Do not place heavy objects on the appliance in order to avoid malfunction.



The apparatus must not be knocked over or subjected to impact or shock in order to avoid malfunction.



The appliance must not be covered when in use.

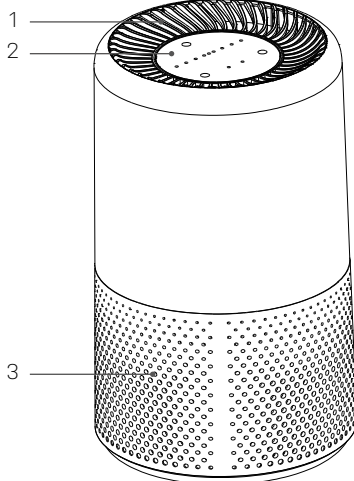


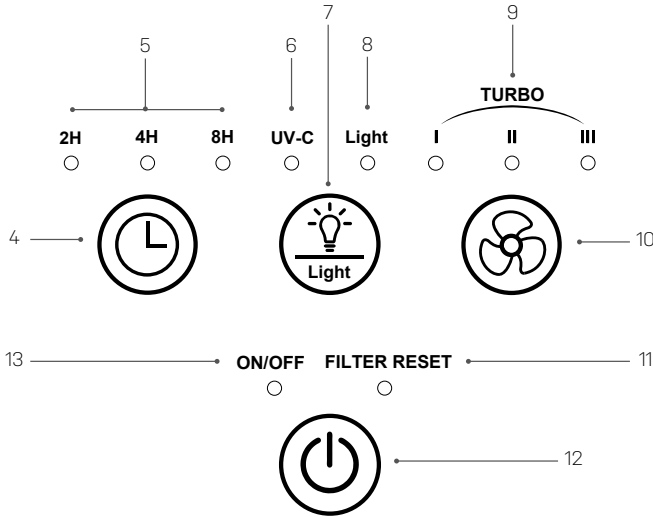
Do not place your hands on the air outlet in order to avoid damage or malfunction.

## 2. Parts list

### Components

1. Control Panel
2. Air Outlet
3. Air Inlet





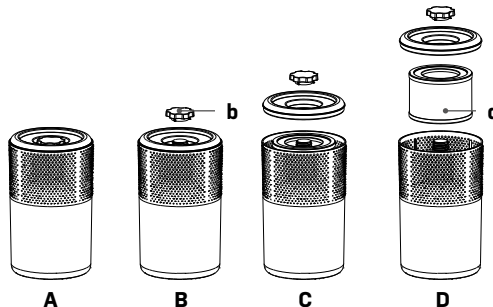
### Control Panel

- |                    |                         |                            |
|--------------------|-------------------------|----------------------------|
| 4. Timer           | 7. Light Mode Button    | 10. Wind Speed Button      |
| 5. Timer Indicator | 8. Light Indicator      | 11. Filter Reset Indicator |
| 6. UV-C Indicator  | 9. Wind Speed Indicator | 12. On/Off Button          |
|                    |                         | 13. On/Off Indicator       |

## 3. Before operation

### Install the filter

1. Unplug the power socket of the machine before replacing or installing the filter.
2. Invert the machine, and rotate the base along the direction marked "OPEN" (Bb).
3. Take out the filter (Dd) from the machine.
4. Remove the packaging of the filter. install the filter into the machine.
5. Then install the base, rotate and tighten the base along the direction marked "CLOSE".



4. Instruction manual

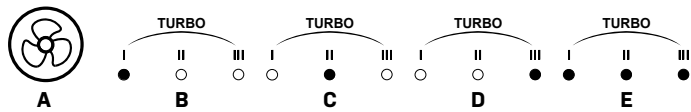
Switching the unit on/off

Connect the power supply and press the on/off button (A) once to turn on the device.



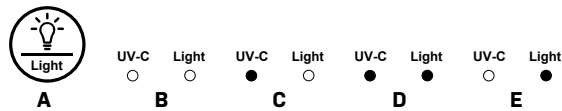
Wind speed

Press the wind speed button (A) to change between the four wind speed modes: Low I (B), Medium II (C), High III (D) and Turbo I/II/III (E).



Light Control

Press the light button (A) to change between the 4 light modes: Light off (B), UV-C light (C), UV-C light & night light (D), night light (E).



Sleep Mode

Press the Light button (A) and hold it for 3-5 seconds. The LED will start flashing for 10 seconds, all the indicators will turn off and Freia will go into sleep mode with the wind speed at low.



### Timer Settings

The device can be set to turn off with the timer. Press the timer button (A) to choose the desired turn off time: 2 hours (B), 4 hours (C) or 8 hours (D).



2H  
●

4H  
○  
**B**

8H  
○

2H  
○

4H  
●  
**C**

8H  
○

2H  
○

4H  
○  
**D**

8H  
●

### IMPORTANT!

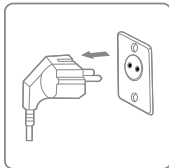
When the unit is not in use, please unplug it.

## 5. Maintenance

### Cleaning

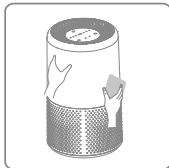
When the appliance is used regularly, the filter can become clogged with dust and particles. Therefore, the filter should be cleaned every month. Follow these steps:

1



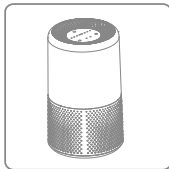
Turn off the unit and unplug it before cleaning.

2



Clean the cabinet with a soft, dry cloth. If the unit is very dirty, use a mild detergent. Wipe the air purifier with a slightly damp cloth. Never spray water on the unit.

3



Remove the filter as described in the "Before operation" section, clean the filter with a vacuum cleaner once a month.

### **Filter change**

Freia comes with an automatic filter replacement warning by turning on a flashing red LED (A). Order a new filter and replace the old one as described in the "Before operation" section.

By pressing and holding the On/Off button (B) for 5 seconds, the filter lifetime will be resettled and the LED (A) will stop flashing.



---

### **IMPORTANT!**

The life time for the filter is 2200 hours.

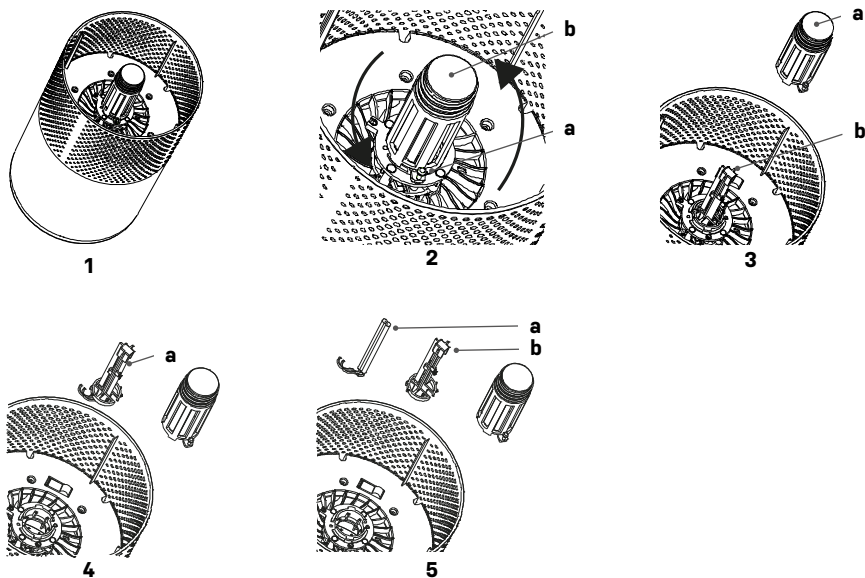
---

### **UV light bulb change**

This is how you change the UV light bulb:

Remove the filter as described in the "Before operation" section.

1. The unit is now ready to get the UV light bulb changed.
2. a) Remove the screw. b) Rotate the UV cover gently to the right.
3. a) Pull the cover. b) The UV protector will now be visible.
4. a) Carefully unplug the UV protector.
5. a) Gently remove the UV light bulb from the UV protector (b) and replace.



## IMPORTANT!

Never look into the UV light.

## 6. Storage

If the unit will not be used for an extended period, do the following:

6. Unplug the unit.
7. Clean the filter with a vacuum cleaner.
8. Make sure the device is in perfect condition so that it is safe to use again after a long storage period.
9. Store the unit in appropriate packaging.
10. Store the unit in a dust-free place and out of direct sunlight. It is recommended to cover it with a piece of plastic.

7. Troubleshooting

Before contacting technical support, check the following.

PROBLEM	POSSIBLE CAUSE	SOLUTION
Not working	Is it plugged into a power socket?	Plug into the socket.
	Is there a power outage?	Wait for the power to return
	Burned fuse?	Check and change the fuse.
	Is the filter change indicator flashing?	Replace the filter.
Poor performance	Is there any dust in the surface of the air inlet?	Clean the air inlet
	Is there any obstacle blocking the airinlet/outlet?	Remove any blocking objects.
Significant noise	Is there anything stuck on the fan in the air outlet?	Remove any blocking objects.
	Is the machine tilted?	Place Freia in the right position
	Set Freia at a lower wind speed if the noise is too loud	
Nasty smell	New machines tend to smell of plastic.	Give it time
	Is the filter dirty?	Clean the filter with a vacuum cleaner.
	Burning smell?	Unplug Freia and contact the support center
Flashing light after filter replacement	Reset Freia by holding the power button down for 5 seconds. The filter lifetime will now start from the beginning.	

8. Technical specifications

Model Freia, Item No.	2515
Recommended working area m²	2 ~ 15
Working humidity RH	30 ~ 90%
CADR m³/h	~100
Power (with HEPA) speed setting 1/2/3/4 W	6 / 7 / 10 / 17
RPM (with HEPA) speed setting 1/2/3/4	820 / 1345 / 2000 / 2750
Standby power W	<0.5
UV-C lamp power W	~3
Power supply V/Hz	100-240 / 50-60
Rated current A	0.31

Timer h	2 / 4 / 8
Operating temperature °C	5~40
Noise level dB(A) speed setting 1/2/3/4	30 / 37 / 47 / 60
Net Weight kg	1.6
Product Size (WDH) mm	200 x 200 x 330

## 9. Service

If you have any questions or need more information, please feel free to call

**Customer service on +45 6916 3200**

If you need service or to make a warranty claim, you must create a case directly in our support system. Go to the home page under SUPPORT.

## 10. Warranty

### Limited warranty

We guarantee that all parts are free of defects in materials and workmanship for a period of two years from the date of purchase. The warranty covers only material or manufacturing defects that prevent the product from being able to be installed or operated in a normal way. Defective parts will be replaced or repaired.

The warranty does not cover transportation damage, any use other than what is intended, damage caused by incorrect assembly or improper use, damage caused by impact or other error, damage caused by frost cracking or by improper storage.

The warranty becomes void if the user modifies the product.

The warranty does not include product-related damage, property damage or general operational loss.

The manufacturer's liability cannot exceed the repair or replacement of defective parts and does not include labour costs to remove and reinstall the defective part, transportation costs to and from the service centre, and all other materials necessary to carry out the repair.

### **This warranty does not cover failure or malfunction as a result of the following:**

- If the unit is not installed, operated or maintained in accordance with the instruction manual supplied with the unit .
- The workmanship of any installation of the unit.
- Misuse, alteration, accident, fire, flood, lightning strike, rodents, insects, negligence or unforeseen events.
- Use of non-factory authorised parts or accessories in conjunction with the product.

**Limitation of liability**

This is the only warranty provided by the manufacturer. No one is authorised to make any other warranties on our behalf.

This warranty is in lieu of all other warranties, expressed or implied, including but not limited to any implied warranty of fitness for a particular purpose and saleability. We expressly disclaim any liability for consequential, incidental, indirect, or consequential damages resulting from any breach of the express or implied warranties.

This warranty gives you specific legal rights, which may vary by country.

**Complaints**

In the event of any warranty claim a valid purchase receipt must be presented. Read about making warranty claims in the SERVICE section.



Thank you for choosing this product.  
Please read this instruction manual before using it.